

Introduction:

We have discussed a great many things this year in World History. I want you to use your creativity and come up with a cartoon that highlights one of the eras we discussed and creates some "school appropriate" humor. You will create your cartoon using the web tool, ToonDoo. Finally, you will post your toon to the class wiki for all to enjoy. You will be able to play around with ToonDoo before you create your cartoon for a grade. I have provided a worksheet in this packet to help guide your journey.

Required Elements:

- You must successfully create an account on ToonDoo.
- Cartoon content must cover an era we discussed this year.
- You must use original dialog.
- Cartoon must make an attempt at school appropriate humor.
- Cartoon must be saved and posted to the class wiki.
- You must use your time wisely to create a quality cartoon.
- You must use the attached worksheet to "Plan" the project before creating the cartoon.

Toon Creation:

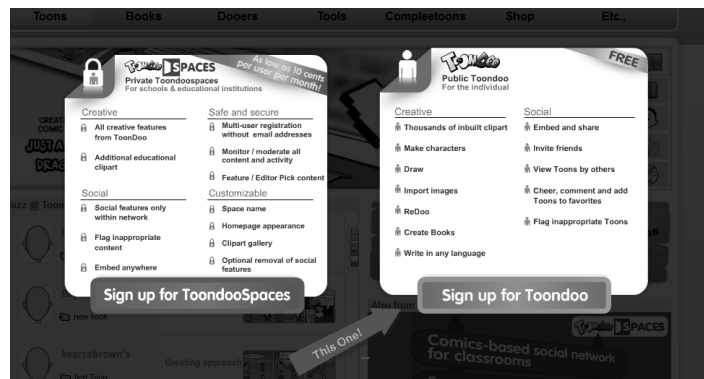
Go to the Class Wiki: <http://mrbanksclass.wikispaces.com/Cartoon+Project>

You will begin by creating an account on ToonDoo.com. This will require an email address. If you have not created an email account yet, follow the instructions for creating a Gmail account on the project wiki.

Step 1: Account Creation.



Click on the link at the top right that says "Sign Up for FREE!"



Choose the free account on the right hand side.

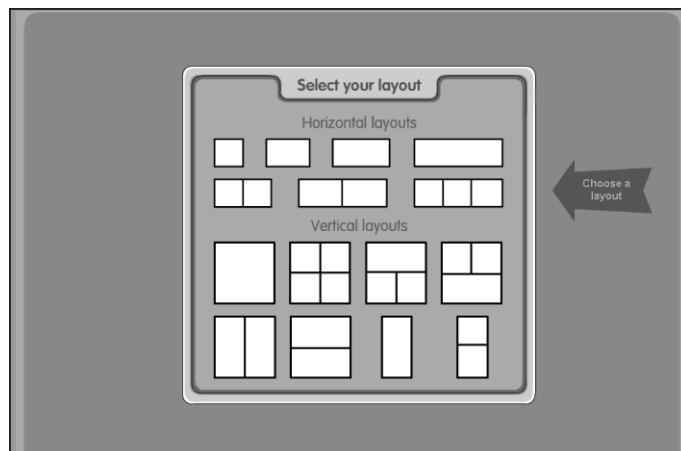


You will enter your correct information. It will prompt you if your chosen Username is already in use. If so, you will have to choose another. When complete, click register. Once complete, you will be allowed to play around with ToonDoo to learn how to use it.

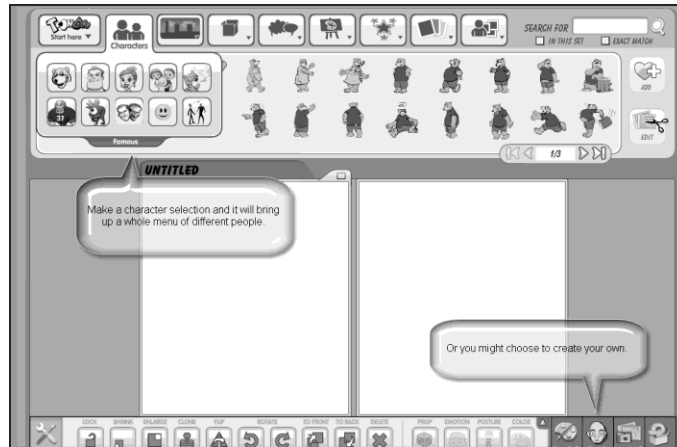
Step 2: Creating a ToonDoo



You will move your pointer over the "Toons" header on the tool bar and select "Create Toon."



You will then be allowed to select a layout for your comic strip. This is where planning will become very important in creating your cartoon. You will have to plan how many cells you will use and what will be in each slide.



Now it's time to pick a character. You may decide to choose a background first when you are making your comic strip for a grade but, this time we will go character first. There are different categories to choose from like historical figures, men, women, kids, etc. If you plan to do something with knights, kings or queens, they are in the unusual section. Once you have found the character you want, drag it from the selection menu to the cell you are working on. If you change your mind, just drag it back to the selection menu.

You might also be adventurous and create your own character using the "TraitRs" generator. Remember that we don't have a lot of time to experiment so you use it wisely. The good thing is that once you create your character, it is saved and you can use it over and over again.



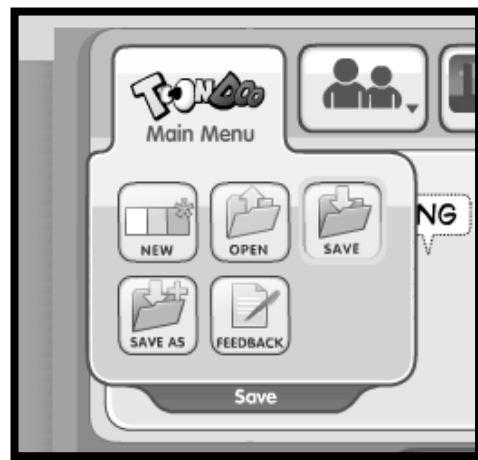
As the illustration shows, you can choose a background and use your enlarge and shrink tools on the bottom toolbar to zoom in and out. This is used with whatever is selected. So if you have your character selected, it will be what is zoomed in and out.

You can also add props or animals to your scene if needed. Just remember, this is an ancient history project!



Now it's time to give your toon a voice by adding a word bubble. They have several different kinds and styles to choose from. Remember use your own words unless you are quoting them, in which case there should be quotation marks and who's saying it. For example, Joan of Arc says, "I will not confess to heresy!" Then you do not have to use their name again in future bubbles unless necessary. Your reader needs to know what is going on, so if they need to know who is, tell them in a word bubble or title.

Once you finish it's time to save your work. I would like you to save your project for class in a specific way.



Your title should be HistToon-(your hour)-(First Initial and last name) or as much as will fit. Then you can put your full name in the description box as shown.

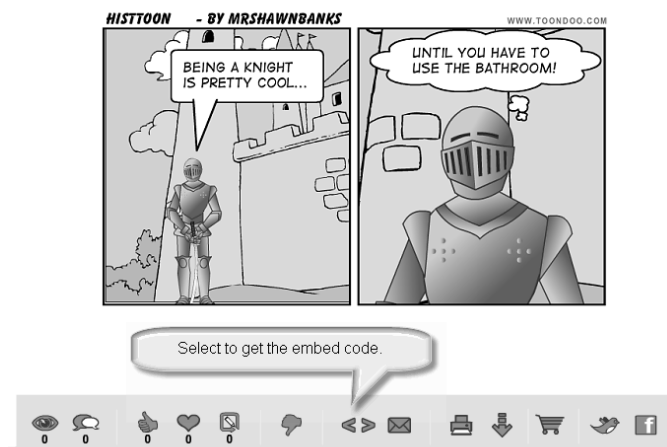
Also let's uncheck the "Let Others Redoo" box. This is your work and we don't want someone to change it.

Not click Publish. Sometimes this takes a minute or so.



You can print your toon later. Let's select "Goto Page."


Step 3: Posting to our Wiki

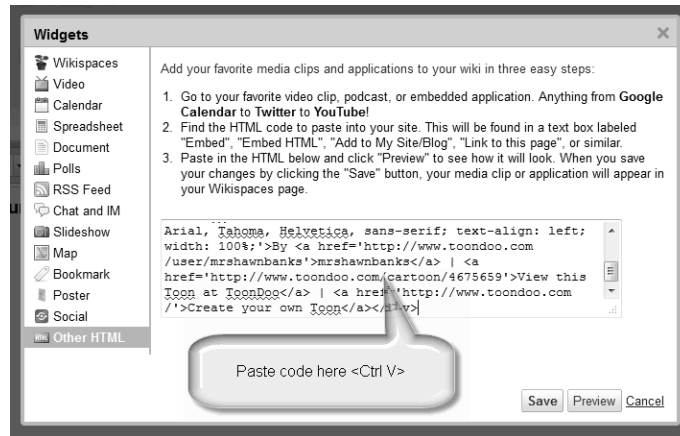


Your toon should look something like this . You will select the brackets and that will automatically copy the code to your clipboard. Then it is back to the Class Wiki:

<http://mrbanksclass.wikispaces.com/Cartoon+Project>

You will select your class' project page, in the left side navigation bar. Once there you will select edit in the top right hand corner. (One word of caution: as this is a collaborative project, everyone has access to edit content. BE CAREFUL NOT TO DELETE ANYONES WORK!)

Go the last entry on the page and jump down a line and type your name. Then hit enter, taking your cursor to the next line. Then select  button at the top on the editing tool bar.



You will select "Other HTML" in the popup and click the empty box that appears. Then you will press Ctrl + V at the same time to paste your code into the box. Then select "Save."



Your entry should look like this... Go to the top edit bar and select



The end result should have your toon with the rest of your class'.

Notes:

ToonDoo Planner:

What Era will you choose? _____

(Possibilities include: Prehistory, Mesopotamia, Egypt, Greece, Rome, Byzantines, China, Japan, Medieval Europe, or the Renaissance.)

Name: _____

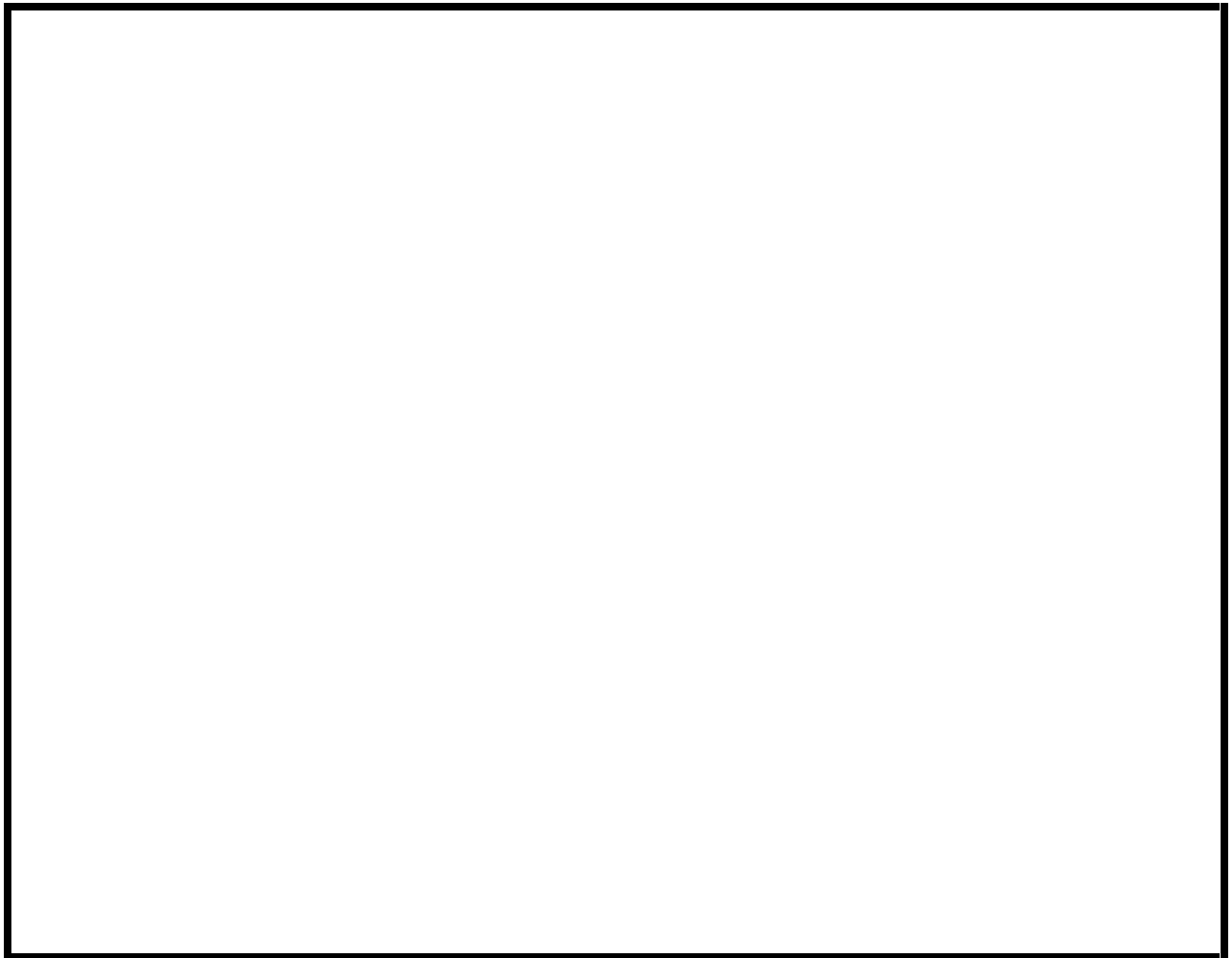
Username: _____

Password: _____

Email: _____

Explain the joke: _____

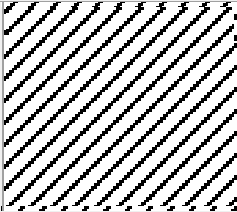
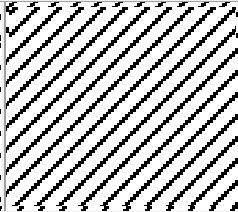
Design your Toon:



ToonDoo - Multimedia : World History Reflection Cartoon

Teacher Name: **Mr. Banks**

Student Name: _____

CATEGORY	5	3	2	1
Required Elements	Cartoon included all required elements as well as a few additional elements.	Cartoon included all required elements and one additional element.	Cartoon included all required elements.	One or more required elements was missing from the cartoon.
Content	All content is in the students' own words and is accurate.	Almost all content is in the students' own words and is accurate.	At least half of the content is in the students' own words and is accurate.	Less than half of the content is in the students' own words and/or is accurate.
Use of Time	Used time well during each class period as shown by observation by teacher with no adult reminders.	Used time well during most class periods as shown by observation by teacher with no adult reminders.	Used time well as shown by observation by teacher but required adult reminders on one or more occasions to do so.	Used time poorly as shown by observation by teacher and/or documentation of progress in journal) in spite of several adult reminders to do so.
Spelling & Grammar	No spelling or grammatical mistakes on a cartoon.			One spelling or grammatical error on the cartoon.
Total Score: (Out of 20)	Notes:			